



HUNTER



HUNTER PANELS XCI **POLYISO INSULATION**



HUNTER XCI AEGIS WALL SYSTEM

Features and Benefits

- Thinner, energy-efficient, code-compliant walls allow for more usable square footage
- Single source solution provides peace of mind surrounding air, water, and thermal protection
- Multi-functionality of materials reduces number of trips around the building minimizing installation costs
- Simplified installation for wall assembly: cladding attaches into OSB or plywood substrate directly over barrier material
- Systemization ensures compatibility of materials performing key functions within the wall assembly

Components

- Xci Ply and Xci Ply Class A
- Xci NB
- Xci VP-SA WRB

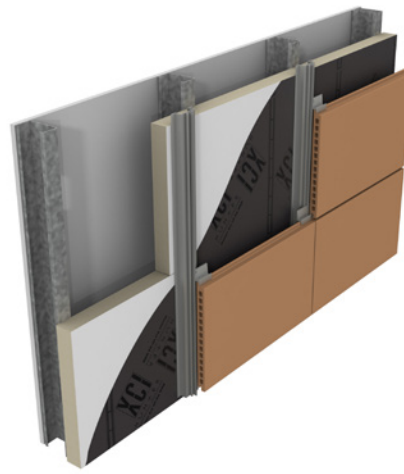
Technical Information

- DrJ TER 2102-05 (Fastening Information)
- TER 1508-01 Structural Applications

Accessories

- Detail Flashing
- Cav-Grip Contact Adhesive (Required)
- SIP SD/SIP SD-PT
- SIP HD/SIP HD-PT
- SIP WD

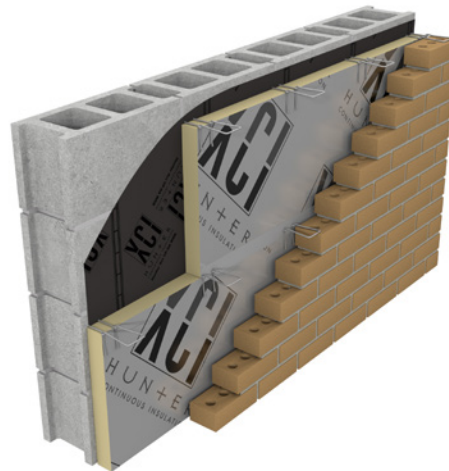
Individual product sheets available on the Hunter Panels website. For more details, contact your local Hunter Xci Sales Rep.



CG & CG CLASS A

Insulation Manufactured On-Line to Premium Performance Coated Glass Facers

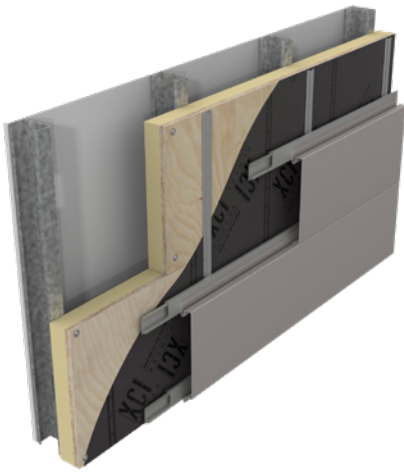
- Coated glass facer offers versatility in walls.
- Can be installed directly on steel studs in a variety of wall assemblies without the need for gypsum sheathing
- Available thicknesses 1" - 4"
- R-values 6.0 - 25.0



FOIL, FOIL CLASS A, & FOIL CLASS A PLUS

Insulation Manufactured On-Line to Foil Facers

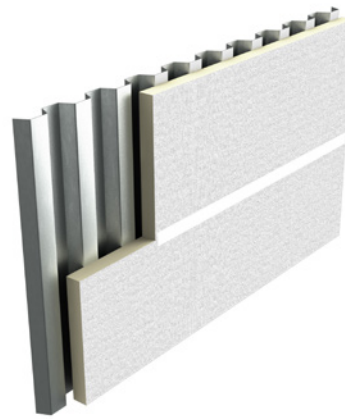
- Reflective foil faced material offers maximum energy efficiency/R-value
- Excels in masonry cavity wall applications
- Available thicknesses 1" - 4"
- R-values 6.5 - 27.0 (Foil)
- R-values 6.0 - 25.0 (Foil Class A)



PLY & PLY CLASS A

Insulation Bonded to Fire Treated Plywood

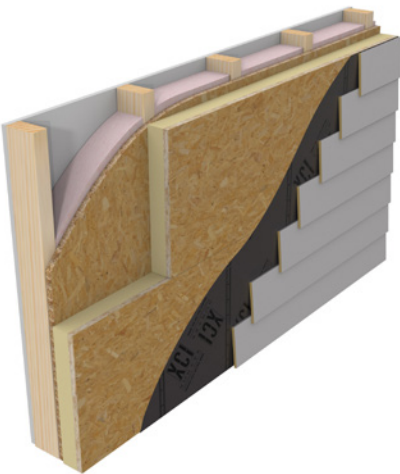
- Can be installed directly to steel studs or wood framing without the need for gypsum sheathing
- Optimal substrate for mechanically attaching cladding materials
- Available thicknesses 1.6" - 4.7"
- R-values 6.8 - 26.0



286

Insulation Manufactured On-Line to Glass Fiber Reinforced Facers

- NFPA 286 for exposed applications for interior wall and ceiling
- Washable white reinforced foil face on one side for light reflectance
- Available thicknesses 1" - 3.5"
- R-values 6.3 - 22.0



NB

Insulation Bonded to OSB or Plywood

- Wood composite material designed for use in residential and Type V commercial applications
- Optimal substrate for mechanically attaching cladding materials
- Thicknesses 1.5" - 4.5", R-values 6.6-25.6 (OSB)
- Thicknesses 1.6" - 4.6", R-values 6.8-25.8 (ply)



CONCAST

Insulation Manufactured On-Line to Poly/Foil Facers

- Designed for use in concrete sandwich wall panels
- Suitable for precast and tilt-up applications
- Available thicknesses 1" - 3.5"
- R-values 6.5 - 24.0



SUSTAINABILITY

Manufactured with NexGen Chemistry

- Blowing agent used has zero ozone depleting potential (ODP)
- Produced with virtually zero global warming potential (GWP)
- Manufacturing process contains no CFCs, HCFCs, or HFCs

Reduced Waste

- Hunter Xci polyiso is made of 9% pre-consumer recycled content

Energy Efficient

- Polyiso insulation has increased R-value per inch when compared to mineral fiber, XPS, or EPS options

ACCESSORIES



Hunter VP-SA WRB

A vapor permeable, self adhering, air and water resistive barrier. Included in the AEGIS Wall System Warranty.



Hunter CAV-GRIP

Low VOC aerosol contact adhesive for use with Xci products. Also used as primer with VP-SA WRB.



Hunter Xci Foil Grip 1402 Tape and Alumagrip 701 Flashing

Indoor/outdoor reflective butyl tape for Xci board seams/joints and butyl flashing for transition areas.



ECHOtape MT A7757 All Weather Aluminum Foil Tape

An indoor/outdoor acrylic tape for Xci board seams/joints



Xci 286 White Foil Tape

A white acrylic seam/joint tape for use with the exposed white side of Xci 286.



Hunter Xci FlexShield

Self-adhering flexible flashing membrane for window sills.



Xci Thermal-Grip IFS Fastener/Gun

Insulation fastening system



SIP/WD

Fastener for wood stud application of Xci Ply, Xci Ply Class A and Xci NB. No pre-drilling required.



SIP/SD and SIP/SD-PT

Fastener for Concrete, CMU and 18 – 22 gauge steel stud application of Xci Ply, Xci Ply Class A and Xci NB. SIP/SD-PT fasteners offer reduced threading to help minimize panel jacking in thinner profiles.



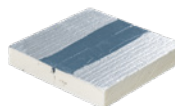
SIP/HD and SIP/HD-PT

Fastener for 12 – 16 gauge steel stud application of Xci Ply, Xci Ply Class A and Xci NB. SIP/HD-PT fasteners offer reduced threading to help minimize panel jacking in thinner profiles.



TRUFast Walls

Thermal-Grip ci Prong Washer, Thermal-Grip Brick Tie Washer, Grip-Deck ci Screw, Plasti-Grip ci Prong Washer, Plasti-Grip® PMF Anchor



BarriBond HP

Liquid flashing and detail sealant available in 20 fl oz. sausages. Apply with trowel in one coat.