



HUNTER

# FOR HUNTER XCI CONTINUOUS INSULATION PRODUCTS BY TRUFast WALLS

## FASTENING INFORMATION

### THERMAL-GRIP® CI PRONG WASHER



#### Applications

- 2" dia. solid cap washer for use with Grip-Deck® ci screws.
- Pre-spotting prongs for easy on-the-wall screw assembly
- Flattens on surface of the insulation without tearing facer
- Maintains air barrier performance

### GRIP-DECK® CI SCREW



#### Applications

- Self-drilling or HiLo threads available for steel or wood studs
- Exterior ceramic coating for corrosion resistance
- Lengths available from 1 5/8" - 6"

### PLASTI-GRIP® CI PRONG WASHER



#### Applications

- 1 3/4" plastic washer with keyholes
- Pre-spotting prongs for easy on-the-wall screw assembly
- Flexible perimeter reduces tearing

### PLASTI-GRIP® PMF ANCHOR



#### Applications

- Insulation attachment to masonry substrates
- Simple installation. Pre-drill hole, then tap flush with hammer
- Plastic design reduces thermal-bridging
- No screws or adhesives required

### THERMAL-GRIP® BRICK-TIE WASHER



#### Applications

- For use with Heckmann Pos-I-Tie® and Wire-Bond Sure-Tie® masonry veneer anchoring systems
- 2" dia. washer secures insulation
- Designed to reduce moisture and air infiltration at anchor points

### Insulation fastener quantity calculator based on square footage for Xci Foil, Xci Foil (Class A), Xci CG, Xci CG (Class A), Xci 286

Screw/washer spacing for steel or wood studs based on 16"x16" spacing in the field and every 12" around perimeter, doors and windows:

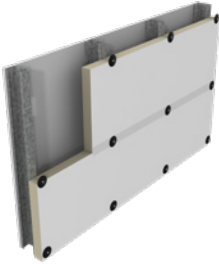
\_\_\_\_\_ sq. ft. x .875 =  
\_\_\_\_\_ fasteners

Plasti-Grip PMF anchors spacing for masonry substrates based on 24"x24" spacing:

\_\_\_\_\_ sq. ft. x .375 =  
\_\_\_\_\_ fasteners

Quantities are for estimating purposes. Actual quantity required may vary depending on door/window openings, design, etc. Penetrations can be reduced if the cladding system will be securing the Xci Polyiso firmly in place.

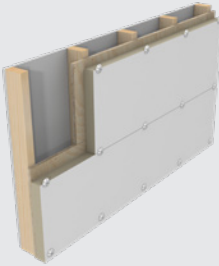
### THERMAL-GRIP® CI PRONG WASHER



#### Applications

- Specified fastener spacing of 16" x 16" in the field and every 12" around doors, windows and perimeter
- Pre-spotting prongs for easy "on-the-wall" screw assembly
- Compress washer until flat. Do not overdrive.

### PLASTI-GRIP® CI PRONG WASHER



#### Applications

- Use to attach insulation over a primary air and weather barrier
- Recommended fastener spacing of 16" x 16"
- Pre-spotting prongs for easy "on-the-wall" screw assembly
- Compress washer until flat. Do not overdrive.

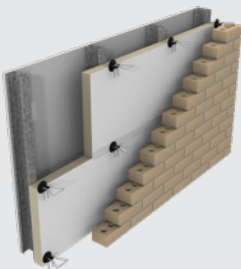
### PLASTI-GRIP® PMF



#### Applications

- Recommended fastener spacing of 24" x 24"
- Simple installation: Pre-drill with 5/16" dia. masonry bit, then tap flush with hammer
- No pins, screws or adhesives required

### THERMAL-GRIP® BRICK-TIE WASHER



#### Applications

- Typical anchor spacing of 16" x 16" (Check with local building codes)
- Dual prongs for easy "on-the-wall" anchor assembly
- 2" dia. solid cap for air barrier performance

For more information and samples, contact Hunter Panels or visit [www.hunterpanels.com](http://www.hunterpanels.com).



CONTINUOUS INSULATION

15 Franklin Street ■ Portland, Maine 04101 ■ 888.746.1114 ■ [info@hpanels.com](mailto:info@hpanels.com) ■ [www.hunterpanels.com](http://www.hunterpanels.com)