



HUNTER Xci PLY, HUNTER Xci PLY (CLASS A) AND HUNTER Xci NB INSTALLATION GUIDELINES

HUNTER
CONTINUOUS INSULATION

Nail Flange Window - Sill

XCI WC5B.1

NOTES

FASTEN AND SHIM WINDOW
ACCORDING TO MANUFACTURERS
INSTRUCTIONS

PROVIDE CONTINUOUS
SEAL OF WINDOW TO
WRB/MEMBRANE WITH
APPROVED SEALANT

INTERIOR FINISH

STEEL OR
WOOD/FIRE TREATED
WOOD STUDS

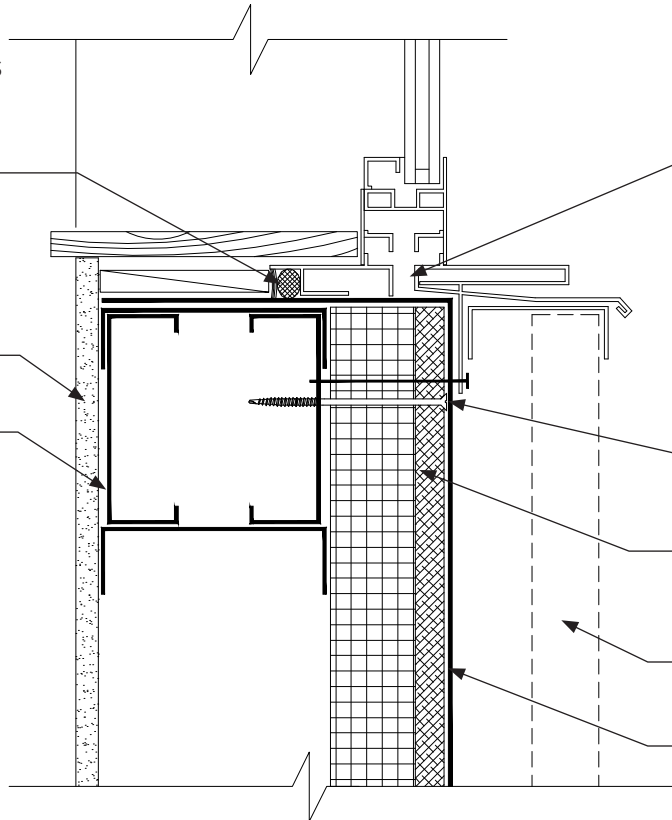
ALIGN WINDOW THERMAL
BREAK WITH WALL
INSULATION

MECHANICAL ATTACHMENT

HUNTER Xci PLY,
HUNTER Xci PLY (CLASS A)
OR HUNTER Xci NB SECURED
TO WALL

EXTERIOR CLADDING

APPROVED MEMBRANE BY
OTHERS



Detail is intended to be a guide for installation of Hunter Panels products only. Detail shown is suitable for use in NFPA 285 complaint wall assemblies with Hunter Xci Ply and Hunter Xci Ply (Class A) products only. Reference Hunter Panels NFPA 285 evaluation reports for further information.

HUNTER Xci PLY, HUNTER Xci PLY (CLASS A) AND HUNTER Xci NB INSTALLATION GUIDELINES



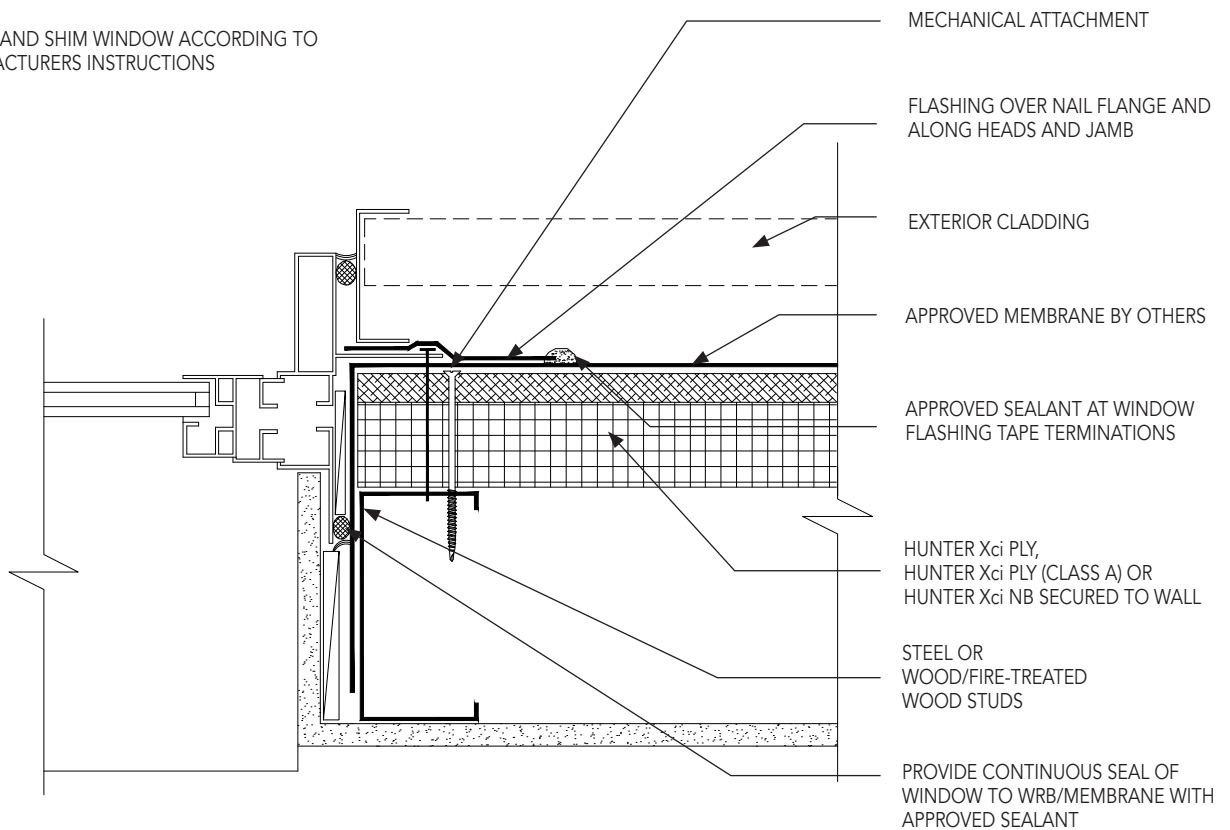
HUNTER
CONTINUOUS INSULATION

Nail Flange Window - Jamb

XCI WC5B.2

NOTES

FASTEN AND SHIM WINDOW ACCORDING TO
MANUFACTURERS INSTRUCTIONS



Detail is intended to be a guide for installation of Hunter Panels products only. Detail shown is suitable for use in NFPA 285 complaint wall assemblies with Hunter Xci Ply and Hunter Xci Ply (Class A) products only. Reference Hunter Panels NFPA 285 evaluation reports for further information.



HUNTER Xci PLY, HUNTER Xci PLY (CLASS A) AND HUNTER Xci NB INSTALLATION GUIDELINES

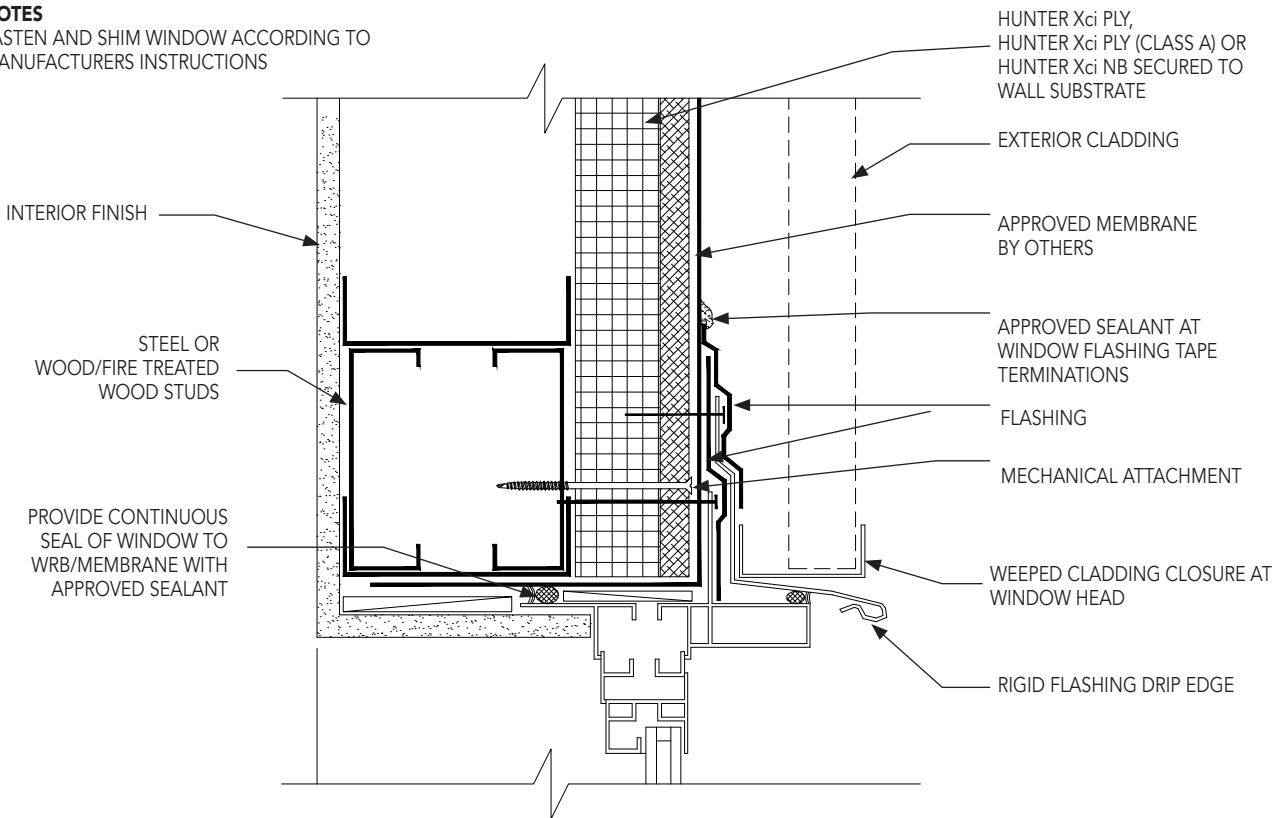
HUNTER
CONTINUOUS INSULATION

Nail Flange Window - Head

XCI WC5B.3

NOTES

FASTEN AND SHIM WINDOW ACCORDING TO MANUFACTURERS INSTRUCTIONS



Detail is intended to be a guide for installation of Hunter Panels products only. Detail shown is suitable for use in NFPA 285 compliant wall assemblies with Hunter Xci Ply and Hunter Xci Ply (Class A) products only. Reference Hunter Panels NFPA 285 evaluation reports for further information.