

HUNTER Xci PLY, HUNTER Xci PLY (CLASS A) AND HUNTER Xci NB INSTALLATION GUIDELINES



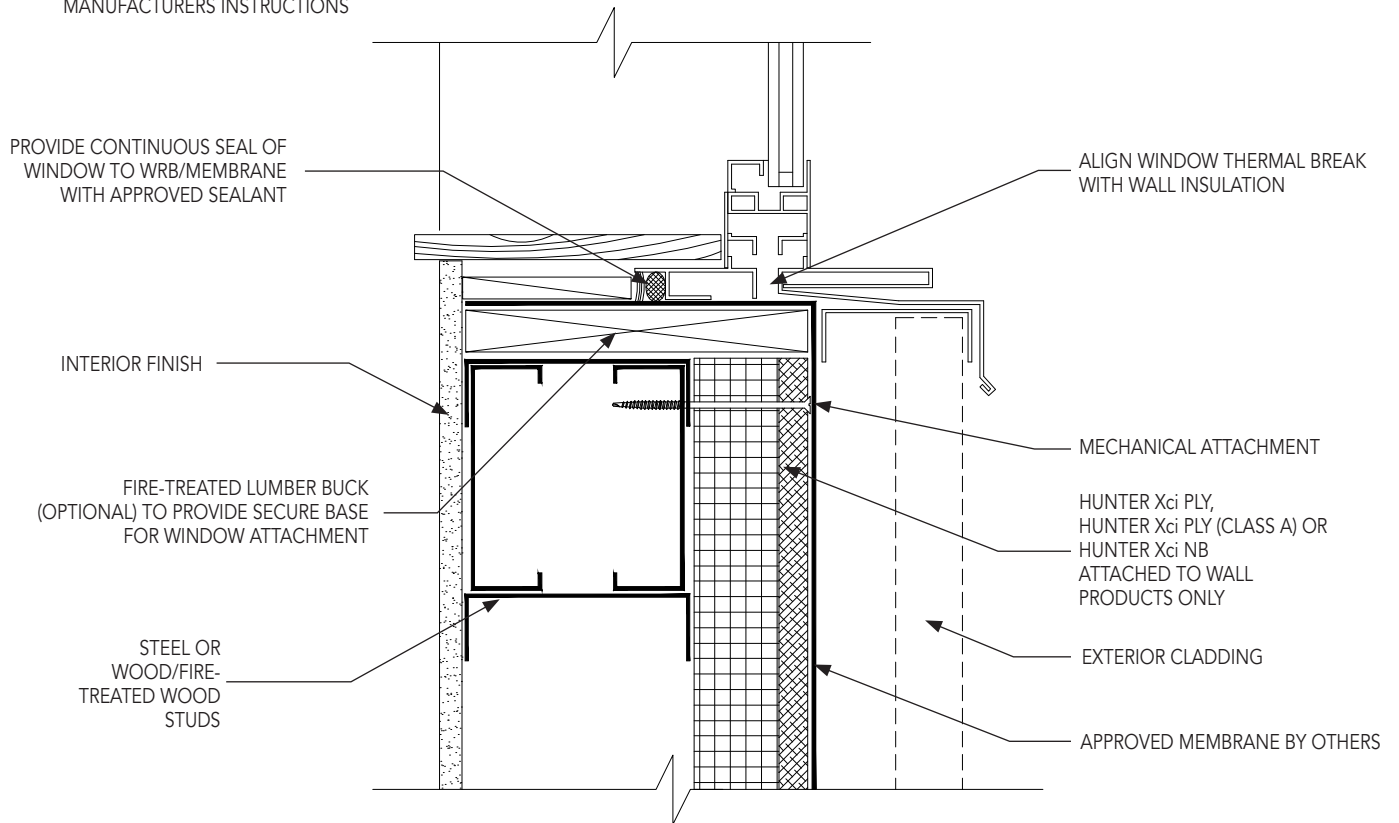
HUNTER
CONTINUOUS INSULATION

Punched Window Sill

XCI WC5A.1

NOTES

FASTEN AND SHIM WINDOW ACCORDING TO
MANUFACTURERS INSTRUCTIONS



Detail is intended to be a guide for installation of Hunter Panels products only. Detail shown is suitable for use in NFPA 285 compliant wall assemblies with Hunter Xci Ply and Hunter Xci Ply (Class A) products only. Reference Hunter Panels NFPA 285 evaluation reports for further information.



HUNTER Xci PLY, HUNTER Xci PLY (CLASS A) AND HUNTER Xci NB INSTALLATION GUIDELINES

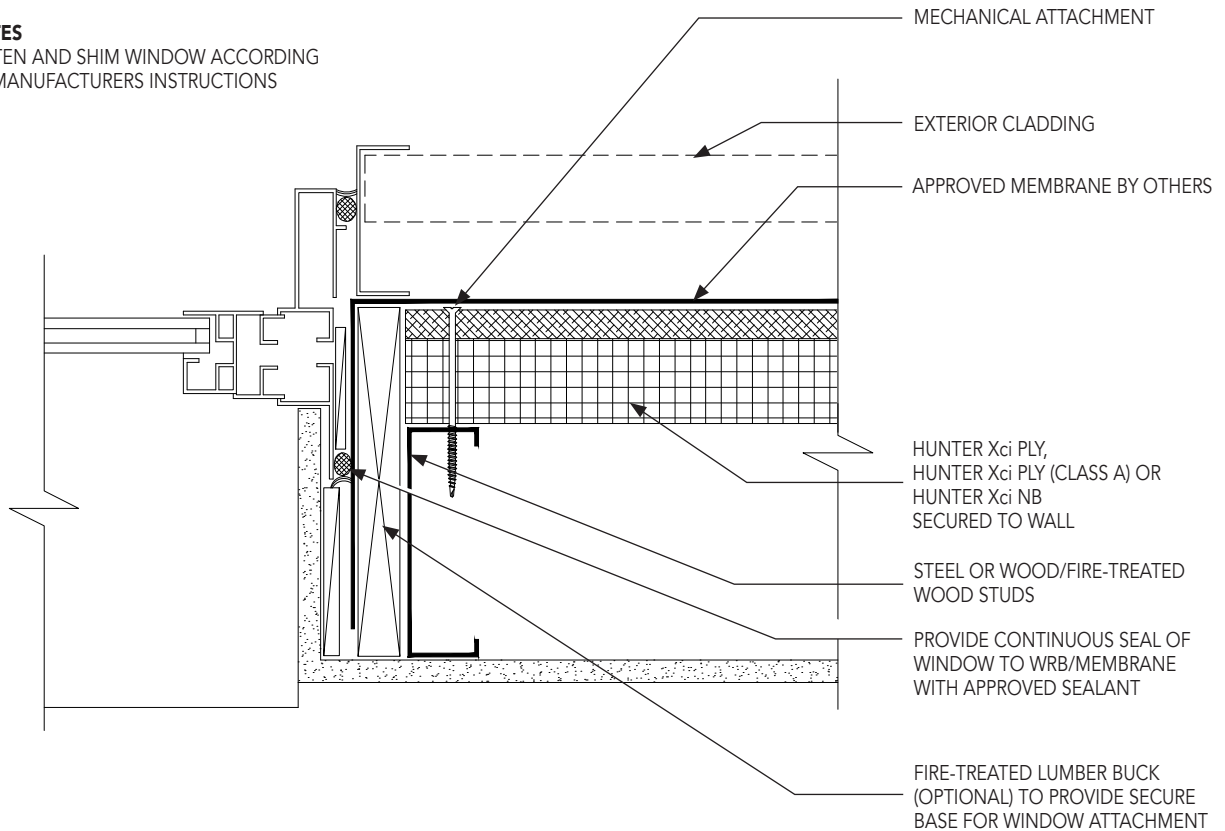
HUNTER
CONTINUOUS INSULATION

Punched Window Jam

XCI WC5A.2

NOTES

FASTEN AND SHIM WINDOW ACCORDING TO MANUFACTURERS INSTRUCTIONS



Detail is intended to be a guide for installation of Hunter Panels products only. Detail shown is suitable for use in NFPA 285 compliant wall assemblies with Hunter Xci Ply and Hunter Xci Ply (Class A) products only. Reference Hunter Panels NFPA 285 evaluation reports for further information.

HUNTER Xci PLY, HUNTER Xci PLY (CLASS A) AND HUNTER Xci NB INSTALLATION GUIDELINES



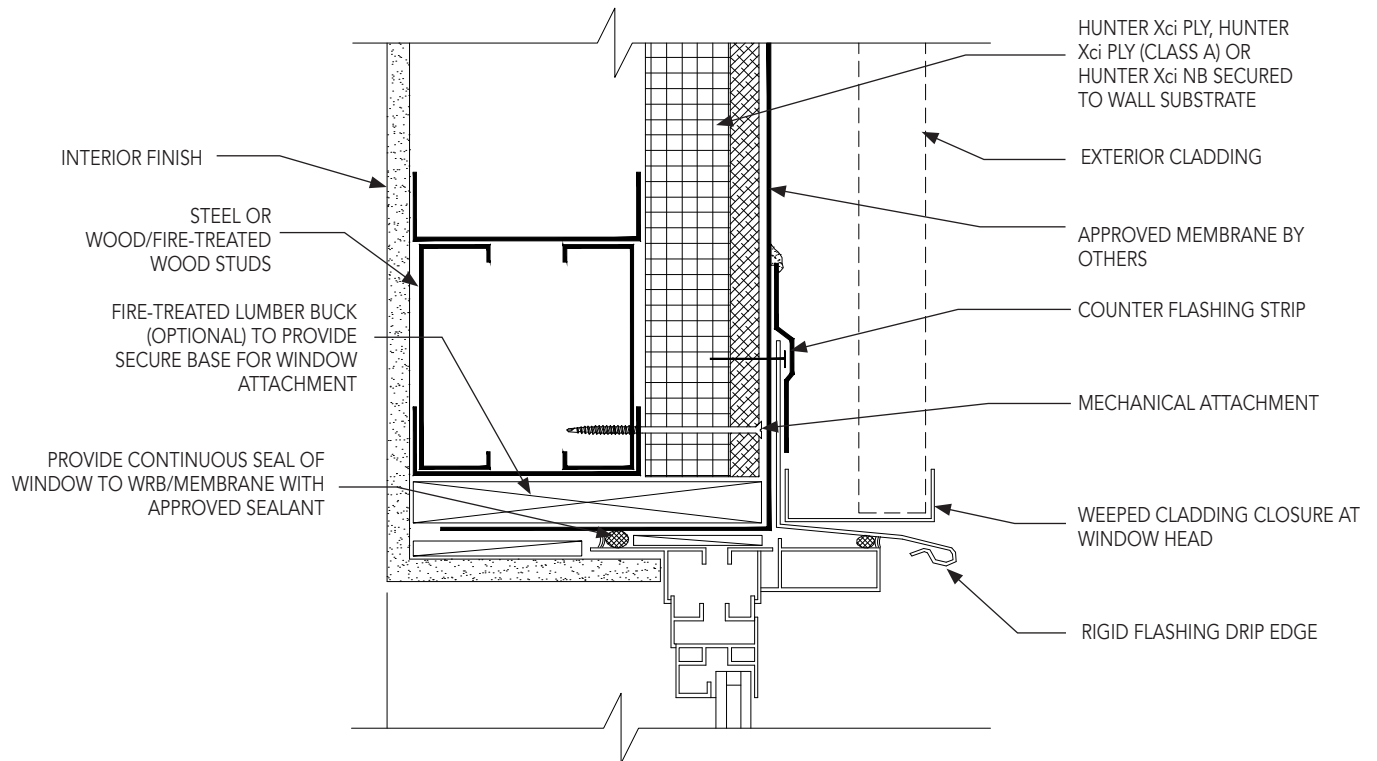
HUNTER
CONTINUOUS INSULATION

Punched Window Head

XCI WC5A.3

NOTES

FASTEN AND SHIM WINDOW ACCORDING TO MANUFACTURERS INSTRUCTIONS



Detail is intended to be a guide for installation of Hunter Panels products only. Detail shown is suitable for use in NFPA 285 complaint wall assemblies with Hunter Xci Ply and Hunter Xci Ply (Class A) products only. Reference Hunter Panels NFPA 285 evaluation reports for further information.