

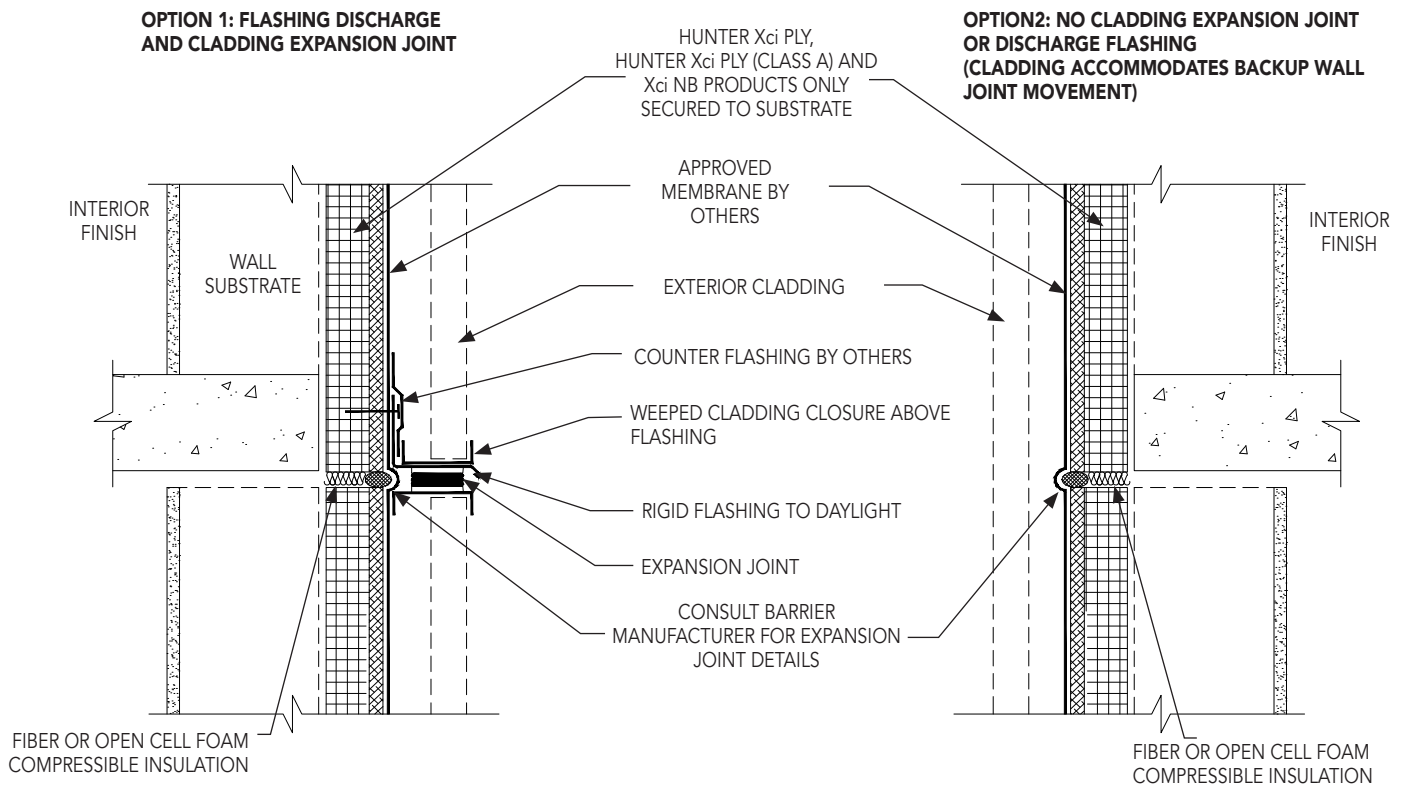
HUNTER Xci PLY, HUNTER Xci PLY (CLASS A) AND HUNTER Xci NB INSTALLATION GUIDELINES



HUNTER
CONTINUOUS INSULATION

Floorline Expansion Joint

XCI WC3



Detail is intended to be a guide for installation of Hunter Panels products only. Detail shown is suitable for use in NFPA 285 compliant wall assemblies with Hunter Xci Ply and Xci Ply (Class A). Reference Hunter Panels NFPA 285 evaluation reports for further information.