



HUNTER Xci PLY, HUNTER Xci PLY (CLASS A) AND HUNTER Xci NB INSTALLATION GUIDELINES

HUNTER
CONTINUOUS INSULATION

Installation Pattern

XCI WC2B

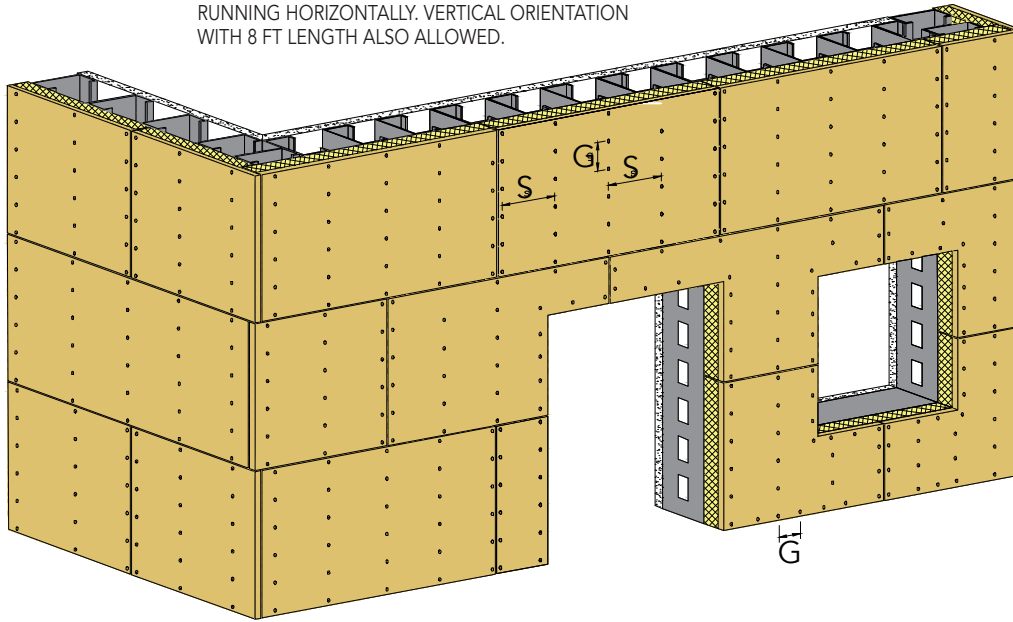
HUNTER Xci PLY, HUNTER Xci PLY (CLASS A) OR
HUNTER Xci NB INSTALLED WITH 8 FT LENGTH
RUNNING HORIZONTALLY. VERTICAL ORIENTATION
WITH 8 FT LENGTH ALSO ALLOWED.

S = HORIZONTAL SPACING

G = VERTICAL SPACING AND
SPACING AT TERMINATIONS.
(FASTENER ENGINEERING
REPORT)

SADDLE CUT OR L-CUT
HUNTER Xci PLY,
HUNTER Xci PLY (CLASS A) OR
HUNTER Xci NB
AROUND OPENINGS.

AT JOINTS AND TERMINATIONS: DRIVE
FASTENERS SO CENTER OF HEAD IS
AT LEAST 1/4" BUT NO MORE THAN 2"
FROM PLYWOOD/OSB EDGE.



CUT FOAM OFF BOARDS OF
HUNTER Xci PLY,
HUNTER Xci PLY (CLASS A) OR
HUNTER Xci NB
FIT WOOD-WOOD CORNERS.

STAGGER VERTICAL JOINTS
6" MINIMUM. NO 4-CORNER
INTERSECTIONS).

FASTEN HUNTER Xci PLY,
HUNTER Xci PLY (CLASS A)
OR HUNTER Xci NB TO WALL
SUBSTRATE

Detail is intended to be a guide for installation of Hunter Panels products only. Detail shown is suitable for use in NFPA 285 compliant wall assemblies with Hunter Xci Ply and Hunter Xci Ply (Class A) products only. Reference Hunter Panels NFPA 285 evaluation reports for further information.