



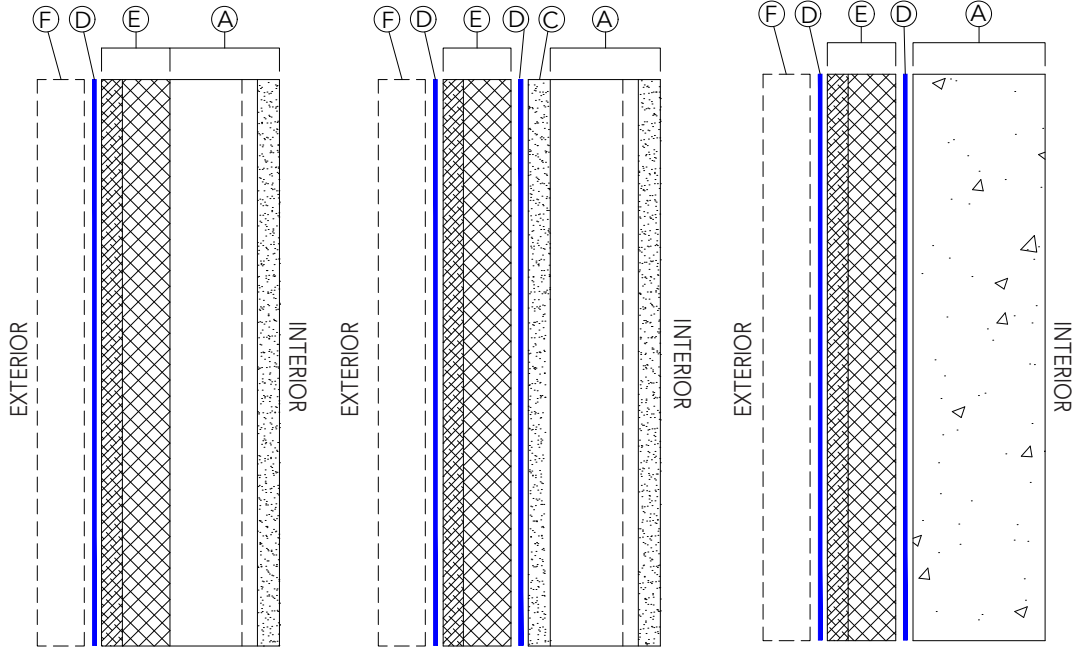
# HUNTER Xci PLY, HUNTER Xci PLY (CLASS A) AND HUNTER Xci NB INSTALLATION GUIDELINES

HUNTER  
CONTINUOUS INSULATION

## NFPA 285 Wall Configurations

## XCI WCOC.3

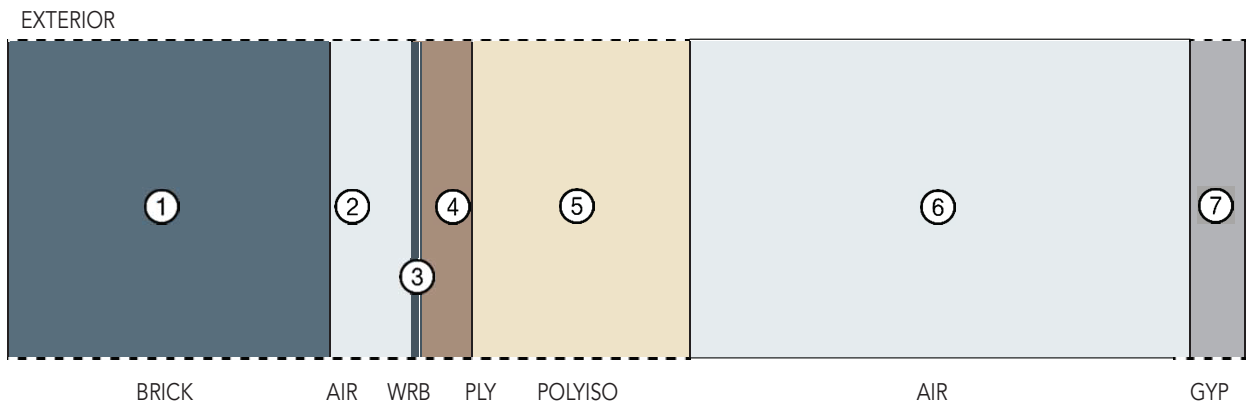
- A: BASE WALL
- B: BATT INSULATION
- C: EXTERIOR GYPSUM
- D: WRB PLACEMENT OPTIONS
- E: HUNTER Xci PLY,  
HUNTER Xci PLY (CLASS A) AND  
HUNTER Xci NB
- F: EXTERIOR CLADDING



HUNTER Xci PLY, HUNTER Xci PLY (CLASS A) AND HUNTER Xci NB TO STUD  
*Detail shown below*

HUNTER Xci PLY, HUNTER Xci PLY (CLASS A) AND HUNTER Xci NB APPLIED TO EXTERIOR SHEATHING

HUNTER Xci PLY, HUNTER Xci PLY (CLASS A) AND HUNTER Xci NB APPLIED TO CMU OR CONCRETE



- 1: EXTERIOR CLADDING
- 2: AIR SPACE, VENTED TO THE EXTERIOR
- 3: HIGH PERMEANCE BARRIER MATERIAL
- 4: WOOD PORTION OF HUNTER Xci PLY,  
HUNTER Xci PLY (CLASS A) OR HUNTER Xci NB
- 5: FOAM PORTION OF HUNTER Xci PLY,  
HUNTER Xci PLY (CLASS A) OR HUNTER Xci NB
- 6: AIR SPACE, DEAD AIR WITHIN WALL CAVITY
- 7: INTERIOR GYPSUM

Detail above is one of many possible NFPA 285 compliant assemblies. Contact Hunter Panels for complete list of assemblies.

Detail is intended to be a guide for installation of Hunter Panels products only. Detail shown is suitable for use in NFPA 285 complaint wall assemblies with Hunter Xci Ply, Hunter Xci Ply (Class A) and Hunter Xci NB products only. Reference Hunter Panels NFPA 285 evaluation reports for further information.