



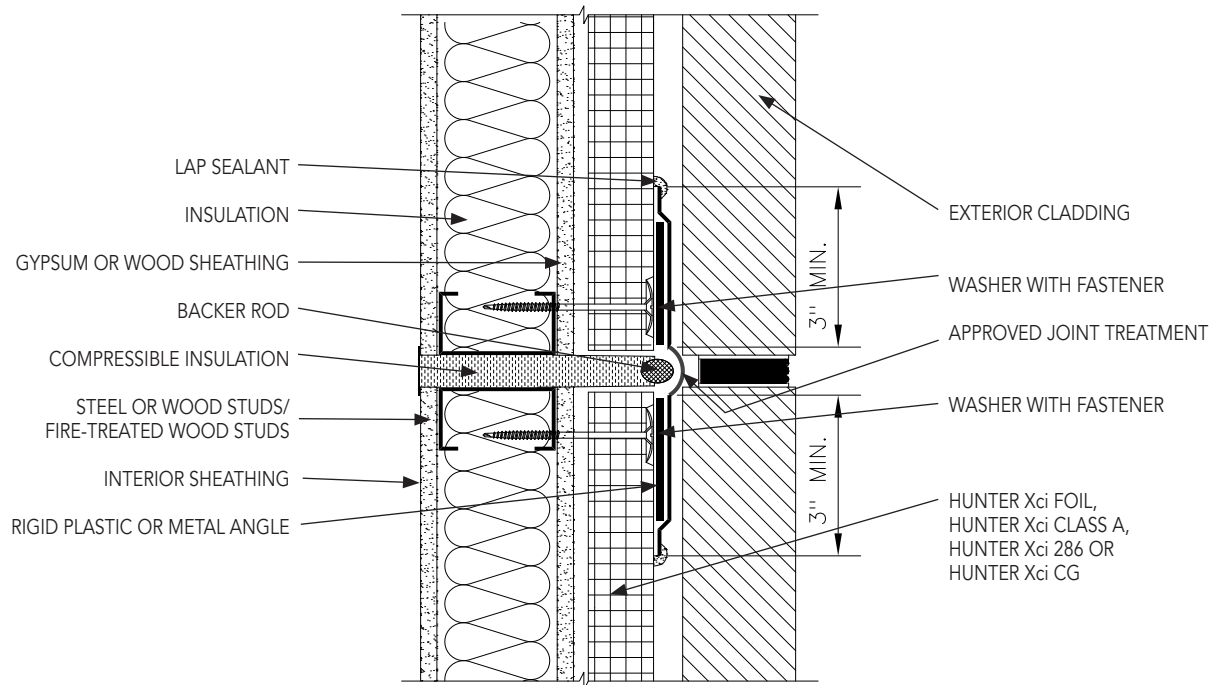
HUNTER Xci POLYISOCYANURATE USED AS AN AIR BARRIER INSTALLATION GUIDELINES

HUNTER
CONTINUOUS INSULATION

XCI AB11

Vertical Expansion Joint

- 1 Verify sheathing has been properly installed. Report any deficiencies and ensure applicable repairs are conducted prior to Hunter Xci polyiso installation.
- 2 Install Hunter Xci polyiso using either the mechanical or adhesive attachment method described above.
- 3 Fill gaps between insulation boards with expanding spray foam or butter edge of board with approved sealant and strike flush. Expanding spray foam may also be applied onto the insulation board edges during installation. Ensure an air-tight installation is achieved.
- 4 Install closed-cell backer rod into the joint protruding from the Hunter Xci polyiso insulation board to create an expansion bulb. Compressible insulation is also used to fill the void.
- 5 Apply approved primer extending the material minimum 1" beyond the edge of the approved joint treatment.
- 6 Cut approved joint treatment to desired length and apply ensuring a minimum 3" bearing onto each side of the joint, avoiding formation of wrinkles or bubbles. Firmly roll the approved joint treatment with hand roller to strengthen adhesion.
- 7 Overlap approved joint treatment a minimum of 3" horizontally and vertically and use approved primer at all splices.
- 8 Verify a continuous air seal is achieved at expansion joint location.



NOTES

- 1 Expansion joint placement and design is per the design professional.