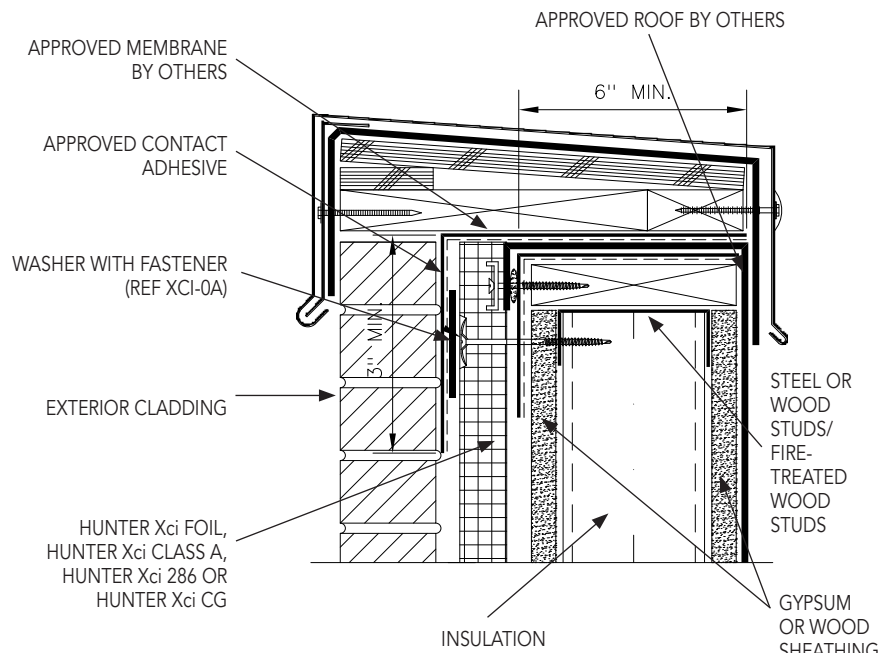


Polyiso Insulation at Parapet

XCI AB10

- 1 Verify sheathing has been properly installed. Report any deficiencies and ensure applicable repairs are conducted prior to Hunter Xci polyiso installation.
- 2 Install Hunter Xci polyiso tight against parapet blocking using either the mechanical or adhesive attachment method described above.
- 3 Fill gaps between insulation boards with expanding spray foam or butter edge of board with approved sealant and strike flush. Expanding spray foam may also be applied onto the insulation board edges during installation. Ensure an airtight installation is achieved.
- 4 Apply approved adhesive extending the material a minimum of 1" beyond the edge of the approved wall flashing.
- 5 Cut wall flashing to desired length and apply over the Hunter Xci polyiso insulation board and up onto the parapet blocking, avoiding formation of wrinkles or bubbles. Firmly roll the flashing with hand roller to strengthen adhesion.
- 6 Verify a continuous air seal at parapet location is achieved (the roofing membrane will typically-applied over the wall flashing).
- 7 Verify that the Hunter Xci polyiso insulation board joints are treated prior to application of the flashing strips in the rough openings.



NOTES

- 1 Ensure roofing is in place and that the building is dried in prior to Hunter Xci polyiso installation