

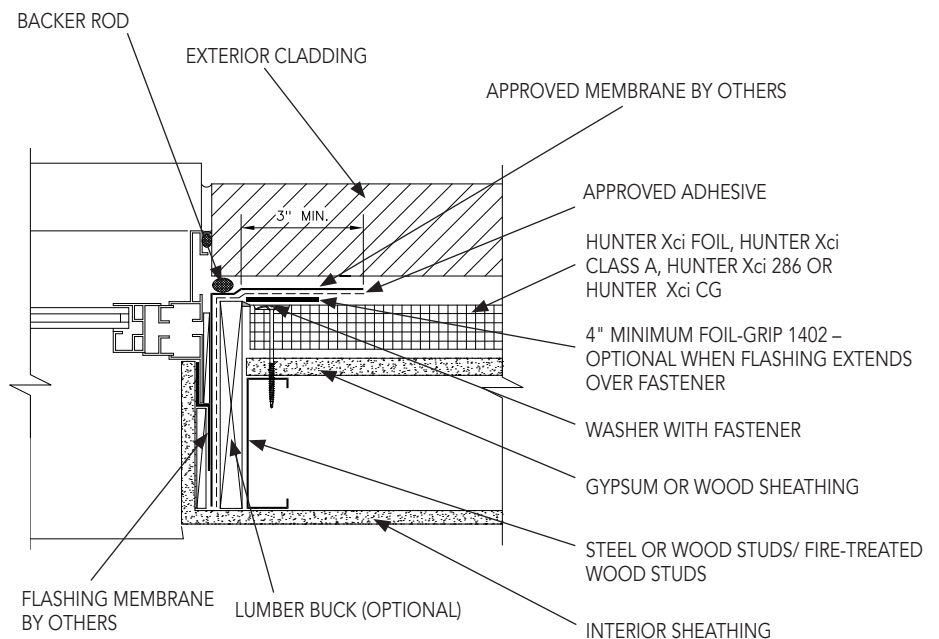


# HUNTER Xci POLYISOCYANURATE USED AS AN AIR BARRIER INSTALLATION GUIDELINES

HUNTER  
CONTINUOUS INSULATION

## XCI AB7 Polyiso Insulation Punched Window- Jamb

- 1 Verify sheathing has been properly installed. Report any deficiencies and ensure applicable repairs are conducted prior to Hunter Xci polyiso installation.
- 2 Install Hunter Xci polyiso tight against the window jamb buck using either the mechanical or adhesive attachment method described above.
- 3 Fill gaps between insulation boards with expanding spray foam or butter edge of board with approved sealant and strike flush. Expanding spray foam may also be applied onto the insulation board edges during installation. Ensure an airtight installation is achieved.
- 4 Apply approved adhesive extending the material a minimum of 1" beyond the edge of the approved flashing material.
- 5 Cut the approved flashing material to desired length and apply over the rough opening framing and down onto the Hunter Xci polyiso insulation board, avoiding formation of wrinkles or bubbles. Firmly roll the flashing with hand roller to strengthen adhesion.
- 6 Verify a continuous air seal at window jamb location will be achieved.
- 7 Ensure that the Hunter Xci polyiso board joints are properly primed prior to application of the approved flashing material in the rough openings.



### NOTES

- 1 Space washer with fastener 12" O/C at window perimeter