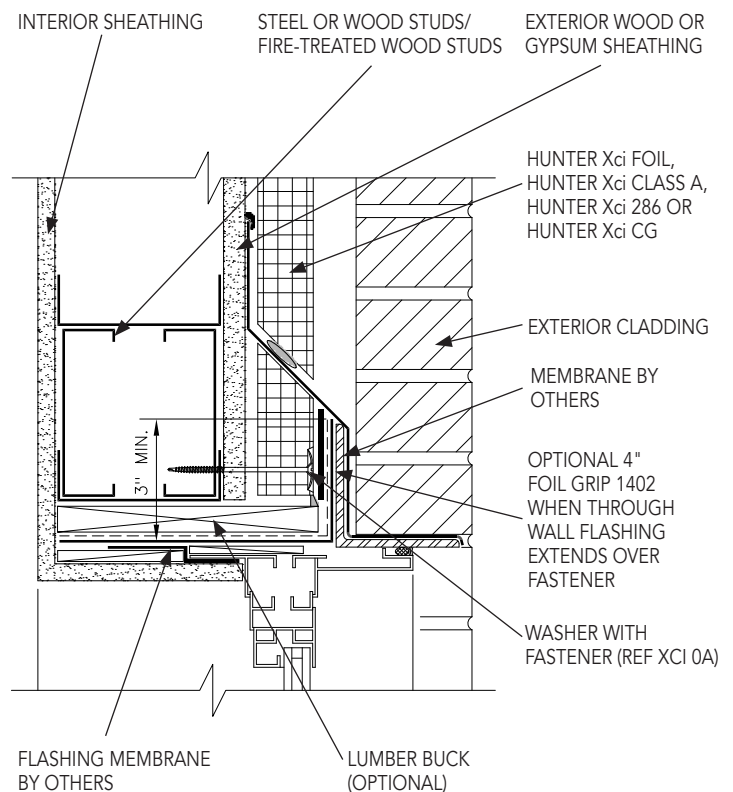


Polyiso Insulation Punched Window - Head

XCI AB8

- 1 Verify sheathing has been properly installed. Report any deficiencies and ensure applicable repairs are conducted prior to Hunter Xci polyiso installation.
- 2 Fill gaps between insulation boards with expanding spray foam or butter edge of board with approved sealant and strike flush. Expanding spray foam may also be applied onto the insulation board edges during installation. Ensure an airtight installation is achieved.
- 3 Apply approved adhesive extending the material a minimum of 1" beyond the edge of the approved through-wall flashing.
- 4 Cut the approved through wall flashing to desired length and apply over the rough opening framing and over onto the Hunter Xci polyiso, avoiding formation of wrinkles or bubbles. Firmly roll the approved through wall flashing with hand roller to strengthen adhesion.
- 5 Brick ledge/lintel is applied in accordance to instructions.
- 6 Apply approved contact adhesive extending the material a minimum of 1" beyond the edge of the approved through wall flashing.
- 7 Install approved through-wall flashing over the sheathing leaving the lower section loose. Incorporate termination bar and approved sealant as required.
- 8 Cut Hunter Xci polyiso with sloped top edge to support flashing. Mechanically or adhesively attach with minimum of one fastener or adhesive dab per linear foot.
- 9 Install flashing/brick ledge per manufacturer's instructions.
- 10 Apply approved contact adhesive and adhere approved through-wall flashing over sloped edge of Hunter Xci polyiso and onto the flashing/brick ledge.
- 11 Cut Hunter Xci polyiso at angle to align with previous applied piece and mechanically or adhesively attach following the specified fastening and adhesive patterns above.
- 12 Apply approved sealant at through-wall flashing gap to ensure an air- and water-tight application is achieved.



NOTES

- 1 Spacer washer with fastener 12" O/C at window perimeter
- 2 Install end dams at ends of flashing.
- 3 Ensure drainage path is maintained and left unobstructed.