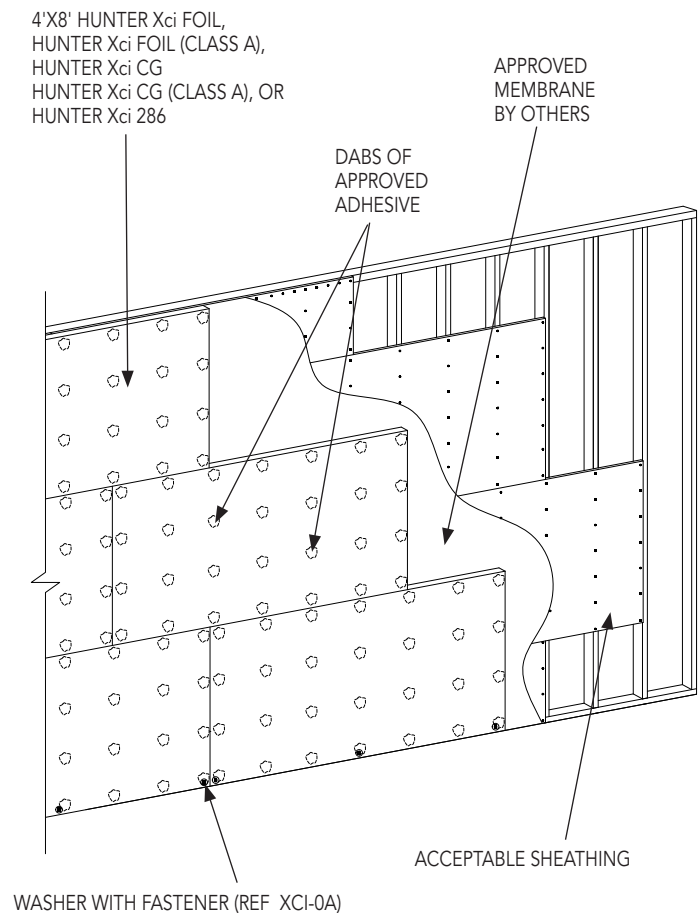


### 4' x 8' Polyiso Insulation Adhesive Pattern

## Installation of 4' x 8' Hunter Xci Polyiso Over Steel Stud/ Standard or FRT Wood Framing with Exterior Gypsum/ Plywood/OSB Sheathing and Air/Vapor/ Water Resistive Barrier

**XCI 2**

- 1 Apply 3/8" thick by 3" diameter dabs of approved adhesive to the back of Hunter Xci polyiso (side that will face sheathing) in 4 rows with a minimum of 7 dabs per row. Space adhesive dabs evenly across the length of the board at no more than 16" o.c. Space dabs in rows of no more than 16" o.c. And no more than 3" from board ends and edges. Immediately place insulation boards against the wall surface before adhesive "skins". If adhesive "skins" remove and apply fresh material. If Hunter Xci polyiso insulation is applied vertically, apply 3/8" thick by 3" diameter dabs of adhesive to the back of Hunter Xci polyiso in 7 rows with a minimum of 4 dabs per row. Space adhesive dabs evenly across the length of the board at no more than 16" o.c. Space dabs in rows of no more than 16" o.c. and no more than 3" from board ends and edges.
- 2 Begin installation from firm support, or washer with fasteners at base.
- 3 Pre-cut Hunter Xci polyiso to fit openings and projections. Stagger vertical joints and corners. Stagger insulation and sheathing board joints minimum 6". Hunter Xci polyiso insulation boards are cut with a knife using a square to guide the cut or table saw.
- 4 Abut all joints tightly and ensure overall flush, level surface.



### NOTES

- 1 3/8" thick by 3" diameter dabs of approved adhesive
- 2 Begin installation at base of wall from firm, permanent, or washer w/fasteners at base (REF XCI-0A)