



HUNTER Xci POLYISOCYANURATE OVER AIR/VAPOR BARRIER INSTALLATION GUIDELINES

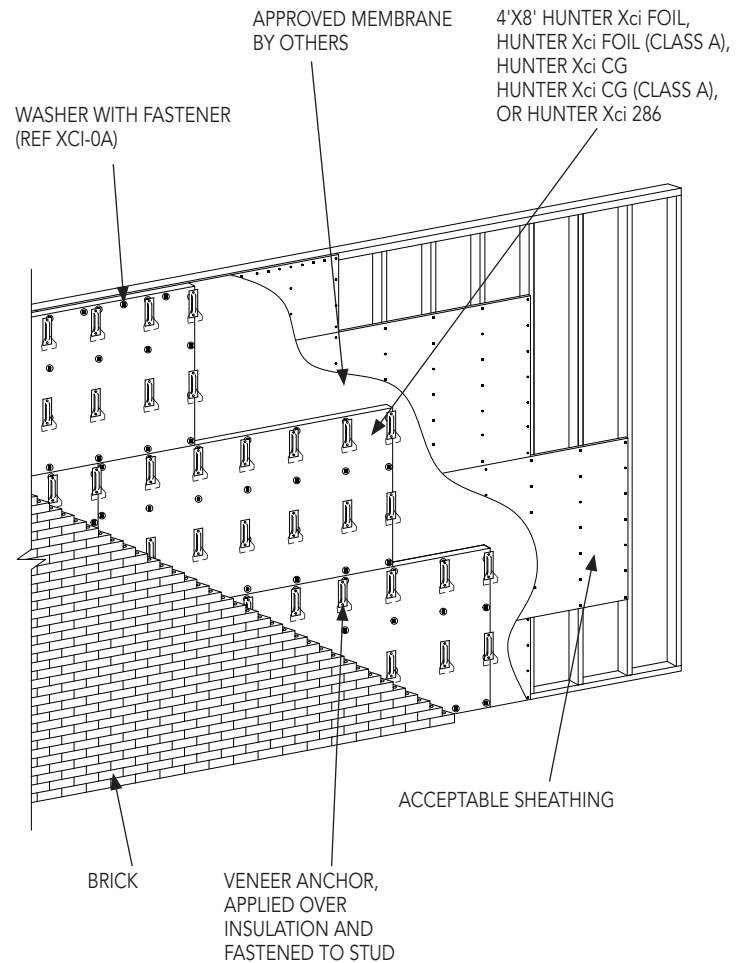
HUNTER
CONTINUOUS INSULATION

XCI 3

4' x 8' Polyiso Insulation with Brick-Ties

Installation of 4' x 8' Hunter Xci Polyiso over Steel Stud/Standard or FRT Wood Framing with Exterior Gypsum/Plywood/OSB Sheathing and Air/Vapor/Water Resistive Barrier using brick ties for insulation attachment

- 1 Follow installation recommendations from XCI 0A on page 7.
- 2 Barrel style brick ties may be used for mechanical attachment provided recommended spacing pattern is honored.
- 3 Care should be taken when installing brick ties so that undue damage is not caused to the underlying barrier or Hunter Xci polyiso.
- 4 Abut all joints tightly and ensure overall flush level surface.
- 5 Fasten Hunter Xci polyiso insulation board to steel framing member with appropriate length fastener min. 4 threads of the fastener into steel framing, min. 1" into wood framing. Space fasteners 12" o.c. at perimeter when applicable and 16" o.c. in the field. Set back perimeter fasteners 3/8" from board edges and ends. One washer may be used to bridge adjoining boards. Drive fasteners so that washer is tight and flush with the surface of the Hunter Xci polyiso, but do not over-tighten.



NOTES

- 1 Follow Brick Tie Manufacturer installation instructions