



HUNTER Xci POLYISOCYANURATE OVER AIR/VAPOR BARRIER INSTALLATION GUIDELINES

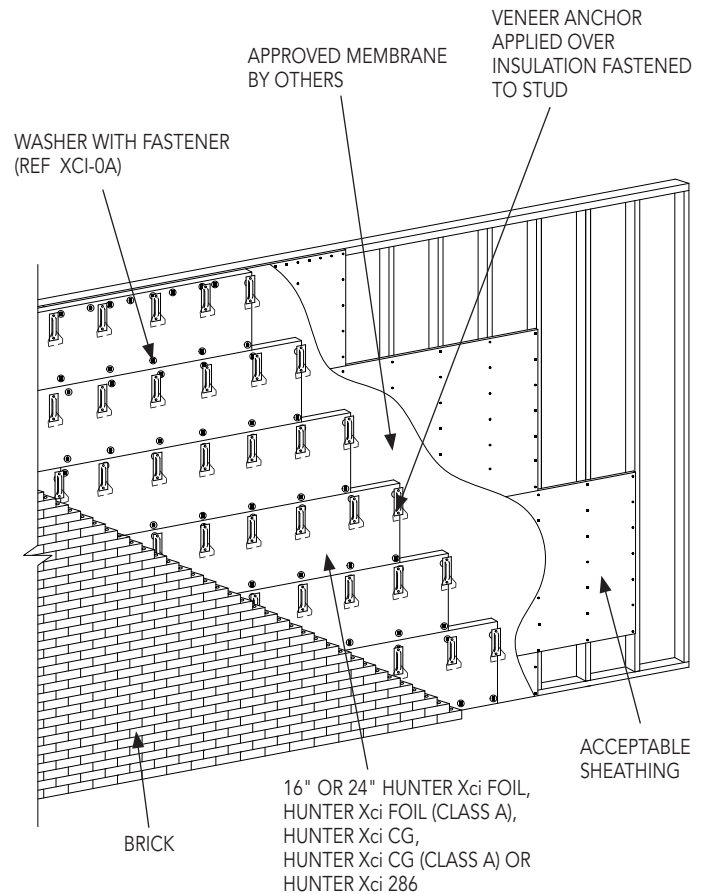
HUNTER
CONTINUOUS INSULATION

XCI 5

16" or 24" Polyiso Insulation with Brick-Ties

Installation of 16" or 24" Hunter Xci Polyiso Over Steel Stud/Standard or FRT Wood Framing with Exterior Gypsum/Plywood/OSB Sheathing and Air/Vapor/ Water Resistive Barrier with Brick-Ties

- 1 Begin at base of wall from firm, permanent, or temporary support.
- 2 Apply Hunter Xci polyiso horizontally in a running bond pattern using maximum board lengths to minimize number of joints. Offset Hunter Xci polyiso board joints minimum 6".
- 3 Pre-cut Hunter Xci polyiso to fit openings and projections. Stagger insulation and sheathing board joints minimum 6". Hunter Xci polyiso insulation boards are cut with a knife using a square to guide the cut or table saw.
- 4 Abut all joints tightly and ensure overall flush level surface.
- 5 Fasten Hunter Xci polyiso insulation board to steel framing member with appropriate length fastener min. 4 threads of the fastener into steel framing, min. 1" into wood framing. Space fasteners 12" o.c. at perimeter when applicable and 16" o.c. in the field. Set back perimeter fasteners 3/8" from board edges and ends. One washer may be used to bridge adjoining boards. Drive fasteners so that washer is tight and flush with the surface of the Hunter Xci polyiso, but do not over-tighten.



NOTES

- 1 Follow Brick Tie Manufacturer insulation instructions