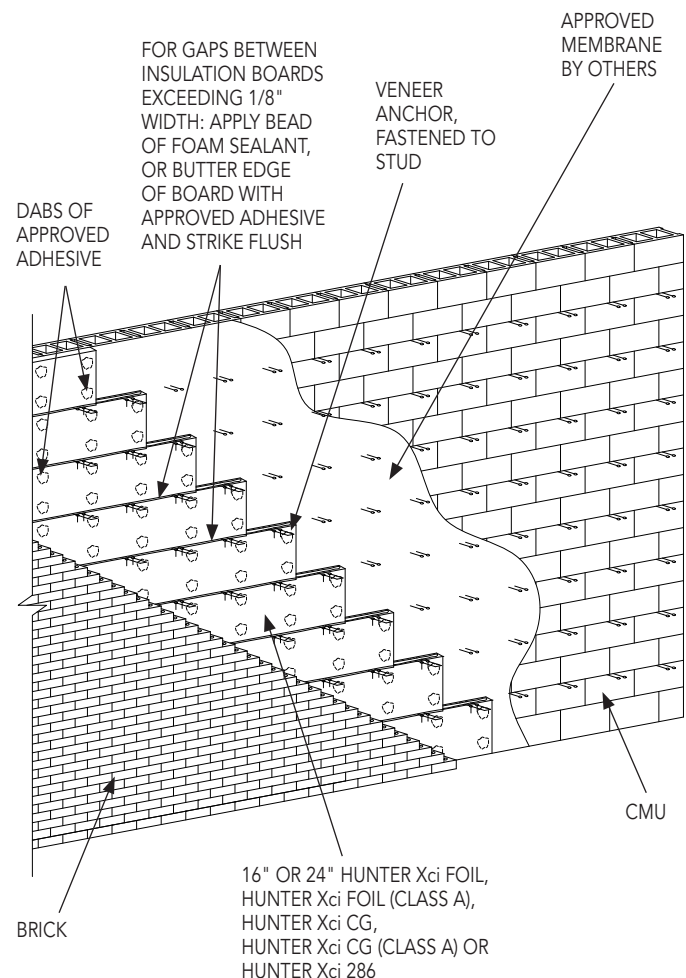


16" or 24" wide Polyiso Insulation with Brick-Ties Installation of 16" or 24" x 8' Hunter Xci Polyiso Over CMU and Air/Vapor/Water Resistive Barrier with Brick-Ties Already in Place

XCI 6

- 1 Begin at base of wall from firm, permanent, or temporary support.
- 2 Apply Hunter Xci polyiso horizontally in a running bond pattern using maximum board lengths to minimize number of joints. Offset Hunter Xci polyiso board joints minimum 6".
- 3 Pre-cut Hunter Xci polyiso to fit openings and projections. Stagger insulation and sheathing board joints minimum 6". Hunter Xci polyiso insulation boards are cut with a knife using a square to guide the cut or table saw.
- 4 Abut all joints tightly and ensure overall flush, level surface.
- 5 Apply 3/8" thick by 3" diameter dabs of approved adhesive to the back of Hunter Xci polyiso (side that will face sheathing) in 2 rows with a minimum of 7 dabs per row. Space adhesive dabs evenly across the length of the board at no more than 16" o.c. Space dabs in rows of no more than 12" o.c. And no more than 3" from board ends and edges. Immediately place insulation boards against the wall surface before adhesive "skins". If adhesive "skins" remove and apply fresh material.
- 6 Fill gaps greater than 1/8" between insulation boards with expanding spray foam or butter edge of board with approved adhesive and strike flush.
- 7 Verify all materials are installed in accordance with current Hunter Panels published literature and local code requirements.



NOTES

- 1 Rodenhouse, Inc. Plasti-Grip PMF fasteners (or approved equal) may be used to mechanically fasten the Hunter Xci polyiso by pre-drilling the insulation board and CMU. The Plasti-Grip PMF fastener is inserted into the hole and applied flush with a hammer.