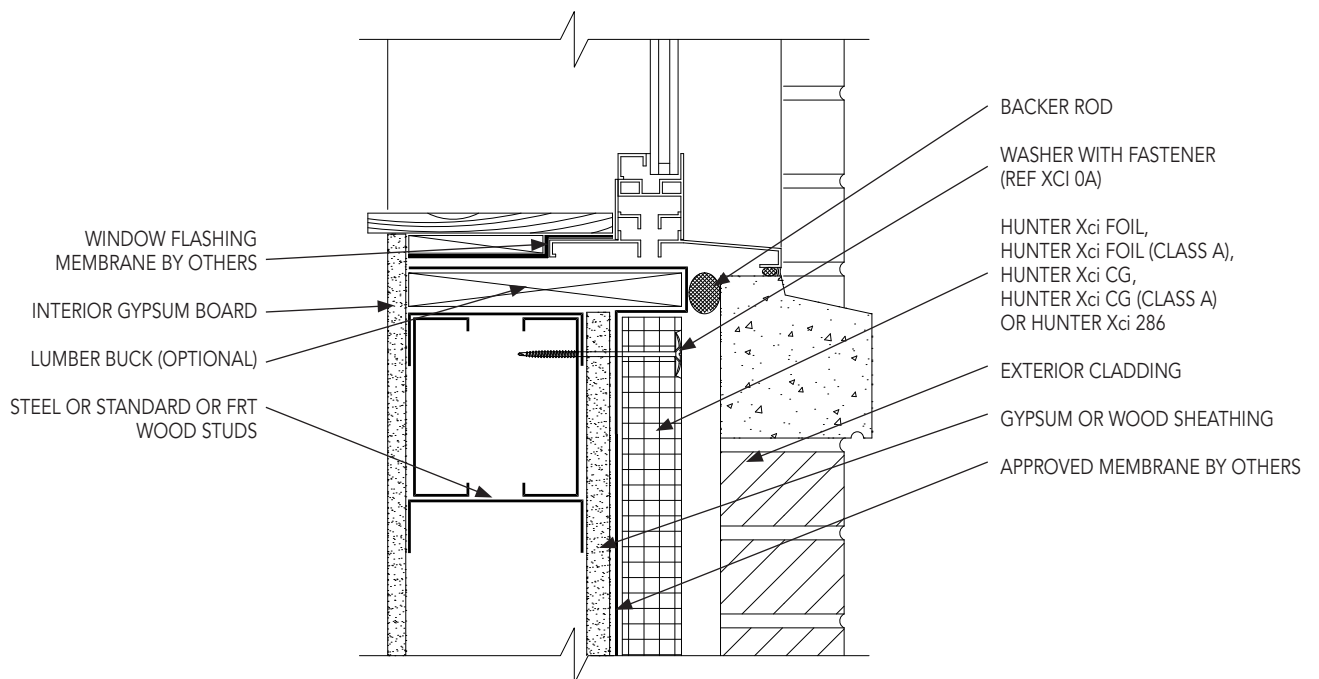


Polyiso Insulation Punched Window - Sill

XCI 8

- 1 Verify air/vapor/water resistive barrier is properly installed and that the rough window opening has been properly flashed and treated and a pinhole void free application has been achieved. Report any deficiencies and ensure applicable repairs are conducted prior to Hunter Xci polyiso installation.
- 2 Fill gaps greater than 1/8" between insulation boards with expanding spray foam or butter edge of board with approved sealant and strike flush. Expanding spray foam may also be applied onto the insulation board edges during installation.
- 3 Install Hunter Xci polyiso tight against the window sill buck using either the mechanical or adhesive attachment method described previously.



NOTES

- 1 Space washer with fastener 12" O/C at window perimeter