



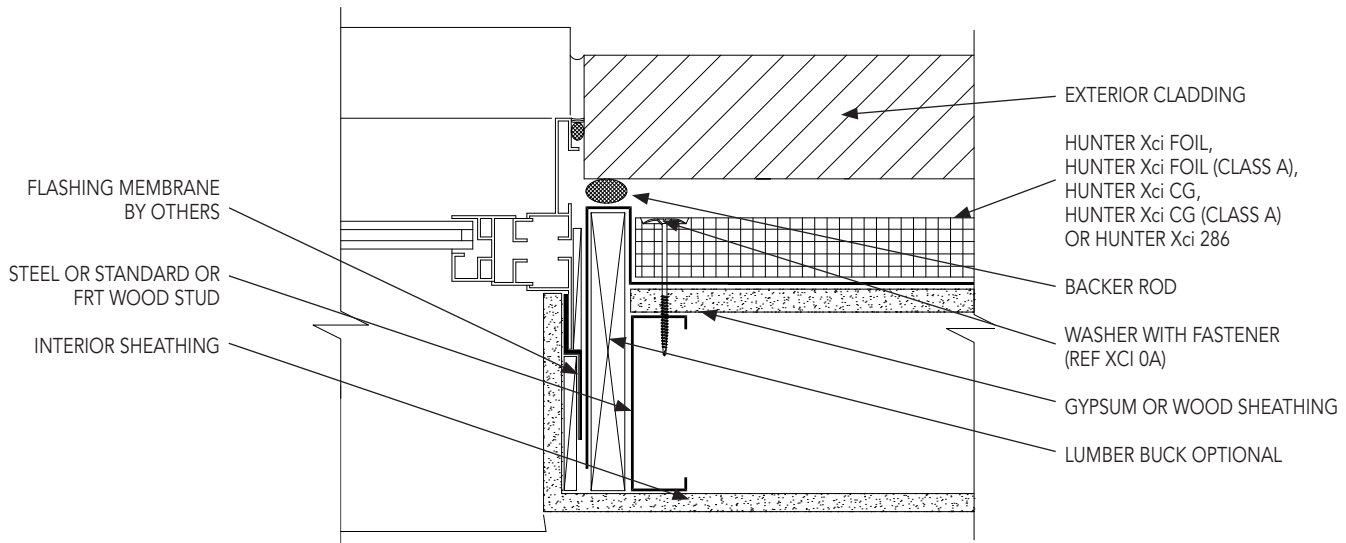
HUNTER Xci POLYISOCYANURATE OVER AIR/VAPOR BARRIER INSTALLATION GUIDELINES

HUNTER
CONTINUOUS INSULATION

XCI 9

Polyiso Insulation Punched Window - Jamb

- 1 Verify air/vapor/water resistive barrier is properly installed and that the rough window opening has been properly treated and a pinhole void free application has been achieved. Report any deficiencies and ensure applicable repairs are conducted prior to Hunter Xci polyiso installation
- 2 Install Hunter Xci polyiso tight against the window jamb buck using either the mechanical or adhesive attachment method described previously.
- 3 Fill gaps greater than 1/8" between insulation boards with expanding spray foam or butter edge of board with approved sealant and strike flush. Expanding spray foam may also be applied onto the insulation board edges during installation.



NOTES

- 1 Space washer with fastener 12" O/C at window perimeter.