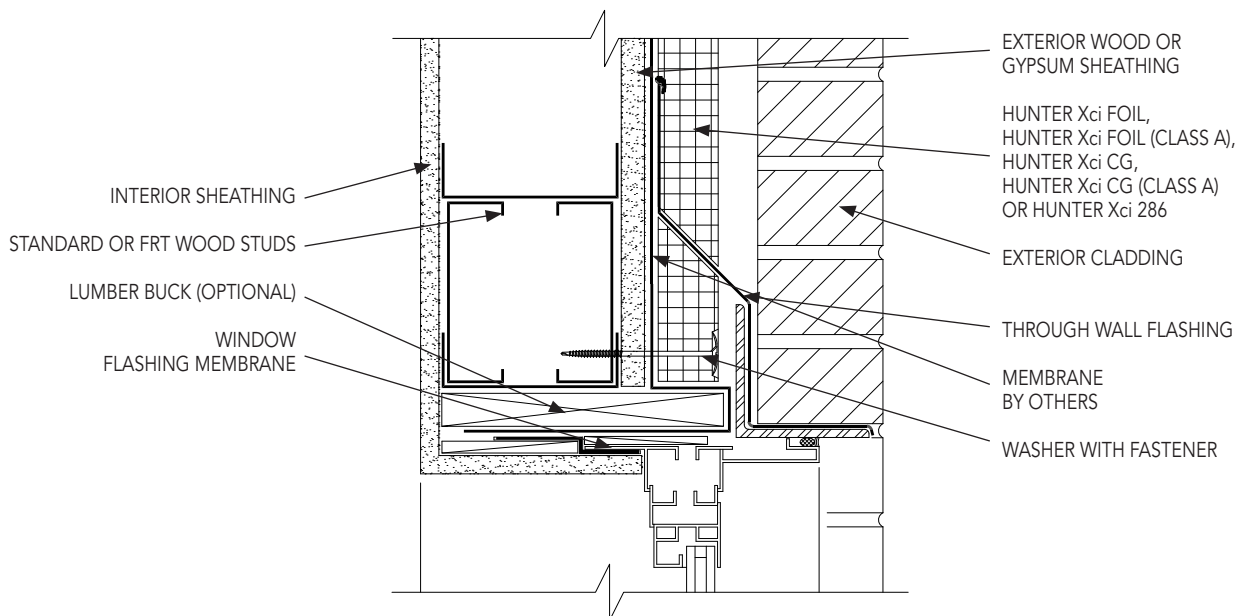


Polyiso Insulation Punched Window - Head

XCI 10

- 1 Verify air/vapor/water resistive barrier is properly installed and that the rough window opening has been properly treated and a pinhole void free application has been achieved. Report any deficiencies and ensure applicable repairs are conducted prior to Hunter Xci polyiso installation.
- 2 Install approved membrane through-wall flashing (by others) over the air/vapor/water resistive barrier leaving the lower section loose. Incorporate termination bar and approved sealant as required.
- 3 Cut Hunter Xci polyiso with sloped top edge to support flashing. Mechanically or adhesively attach with minimum of one fastener or adhesive dab per linear foot.
- 4 Adhere membrane thru-wall flashing (by others) over sloped edge of Hunter Xci polyiso.
- 5 Cut Hunter Xci polyiso at angle to align with previous applied piece and mechanically or adhesively attach following the specified fastening and adhesive patterns previously listed.
- 6 Fill gaps greater than 1/8" between insulation boards with expanding spray foam or butter edge of board with approved sealant and strike flush. Expanding spray foam may also be applied onto the insulation board edges during installation.



NOTES

- 1 Space washer with fastener 12" O/C at window perimeter
- 2 Install end dams at ends of through-wall flashing
- 3 Ensure drainage path is maintained and left unobstructed