

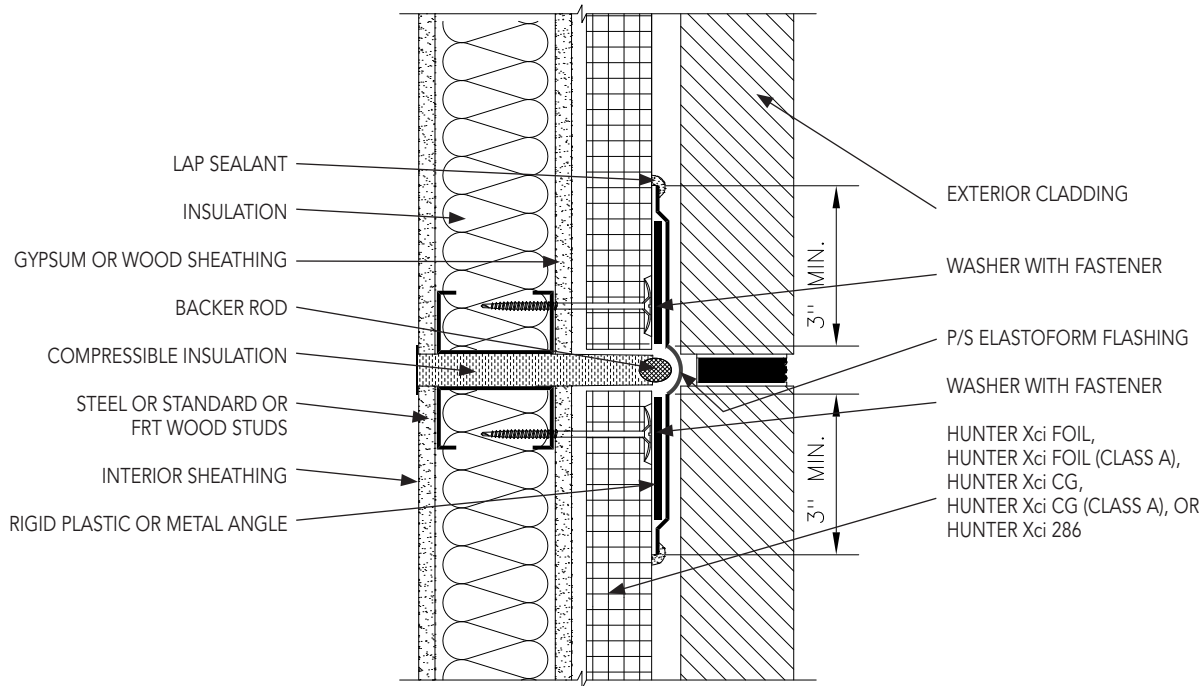


HUNTER Xci POLYISOCYANURATE OVER AIR/VAPOR BARRIER INSTALLATION GUIDELINES

HUNTER
CONTINUOUS INSULATION

XCI 13 Vertical Expansion Joint

- 1 Verify air/vapor/water resistive barrier is properly installed and a pinhole void free application has been achieved. Report any deficiencies and ensure applicable repairs are conducted prior to Hunter Xci polyiso installation.
- 2 Verify expansion joint has been properly treated.
- 3 Install Hunter Xci polyiso against the joint but not over the joint using either the mechanical or adhesive attachment method described. Fill gaps greater than 1/8" between insulation boards with expanding spray foam or butter edge of board with approved sealant and strike flush. Expanding spray foam may also be applied onto the insulation board edges during installation.



NOTES

- 1 Expansion joint placement and design is per the design professional.