



High Performance Fastening Systems for Hunter Xci Continuous Insulation Products by Rodenhouse Inc.

THERMAL-GRIP® ci PRONG WASHER



APPLICATIONS

- 2" dia. solid cap washer for use with Grip-Deck® ci screws.
- Pre-spotting prongs for easy on-the-wall screw assembly
- Flattens on surface of the insulation without tearing facer
- Maintains air barrier performance

GRIP-DECK® ci SCREW



APPLICATIONS

- Self-drilling or HiLo threads available for steel or wood studs
- Exterior ceramic coating for corrosion resistance
- Lengths available from 1-5/8" – 6"

PLASTI-GRIP® ci PRONG WASHER



APPLICATIONS

- 1-3/4" plastic washer with keyholes
- Pre-spotting prongs for easy on-the-wall screw assembly
- Flexible perimeter reduces tearing

PLASTI-GRIP® PMF ANCHOR



APPLICATIONS

- Insulation attachment to masonry substrates
- Simple installation. Pre-drill hole, then tap flush with hammer
- Plastic design reduces thermal-bridging
- No screws or adhesives required

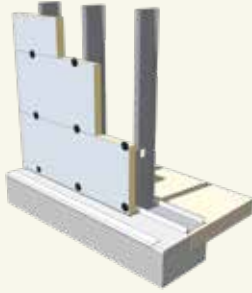
THERMAL-GRIP® BRICK-TIE WASHER



APPLICATIONS

- For use with Heckmann Pos-I-Tie® and Wire-Bond Sure-Tie® masonry veneer anchoring systems
- 2" dia. washer secures insulation
- Designed to reduce moisture and air infiltration at anchor points

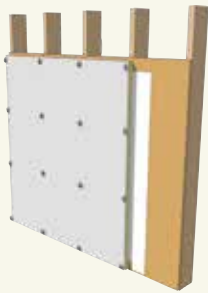
THERMAL-GRIP® ci PRONG WASHER



APPLICATIONS

- Specified fastener spacing of 16" x 16" in the field and every 12" around doors, windows and perimeter
- Pre-spotting prongs for easy "on-the-wall" screw assembly
- Compress washer until flat. Do not overdrive.

PLASTI-GRIP® ci PRONG WASHER



APPLICATIONS

- Use to attach insulation over a primary air and weather barrier
- Recommended fastener spacing of 16" x 16"
- Pre-spotting prongs for easy "on-the-wall" screw assembly
- Compress washer until flat. Do not overdrive.

PLASTI-GRIP® PMF

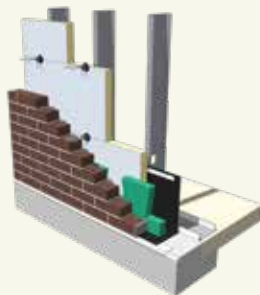


APPLICATIONS

- Recommended fastener spacing of 24" x 24"
- Simple installation: Pre-drill with 5/16" dia. masonry bit, then tap flush with hammer
- No pins, screws or adhesives required

PMF Size	Insulation Thickness
2"	1/2" - 3/4"
2 3/4"	1" - 1 1/2"
3 1/2"	1 1/2" - 2"
4 1/2"	2 1/2" - 3"
5"	3 1/2" - 4"
6 1/4"	4 1/2" - 5"

THERMAL-GRIP® BRICK-TIE WASHER



APPLICATIONS

- Typical anchor spacing of 16" x 16" (Check with local building codes)
- Dual prongs for easy "on-the-wall" anchor assembly
- 2" dia. solid cap for air barrier performance

For more information on all
Hunter Xci products,
visit www.hunterpanels.com.

