



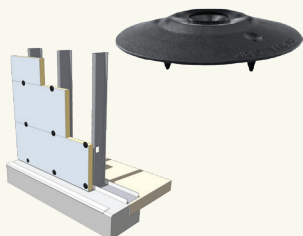
HUNTER  
CONTINUOUS INSULATION

## High Performance Washers for Use with Continuous Insulation:

Thermal-Grip® ci Prong Washer,  
Thermal-Grip® Brick-Tie Washer  
and Plasti-Grip® ci Prong Washer

For use with Hunter Xci products

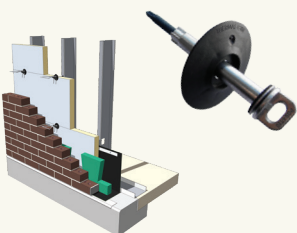
### THERMAL-GRIP® ci PRONG WASHER



#### APPLICATIONS

- 2" dia. solid cap washer for use with Grip-Deck® ci screws
- Flattens on surface of the insulation without tearing facer
- Maintains air barrier performance
- Pre-spotting prongs for easy "on-the-wall" screw assembly
- Compress washer until flat. Do not overdrive.

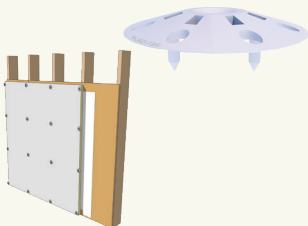
### THERMAL-GRIP® BRICK-TIE WASHER



#### APPLICATIONS

- For use with Heckmann Pos-I-Tie® and Wire-Bond Sure-Tie® masonry veneer anchoring systems
- 2" dia. washer secures insulation
- Designed to reduce moisture and air infiltration at anchor points
- Typical anchor spacing of 16" x 16" (Check with local building codes)
- Dual prongs for easy "on-the-wall" anchor assembly
- 2" dia. solid cap for air barrier performance

### PLASTI-GRIP® ci PRONG WASHER



#### APPLICATIONS

- 1-3/4" plastic washer with keyholes
- Flexible perimeter reduces tearing
- Use to attach insulation over a primary air and weather barrier
- Recommended fastener spacing of 16" x 16"
- Pre-spotting prongs for easy "on-the-wall" screw assembly
- Compress washer until flat. Do not overdrive.

For more information on all  
Hunter Xci products,  
visit [hunterpanels.com](http://hunterpanels.com).

