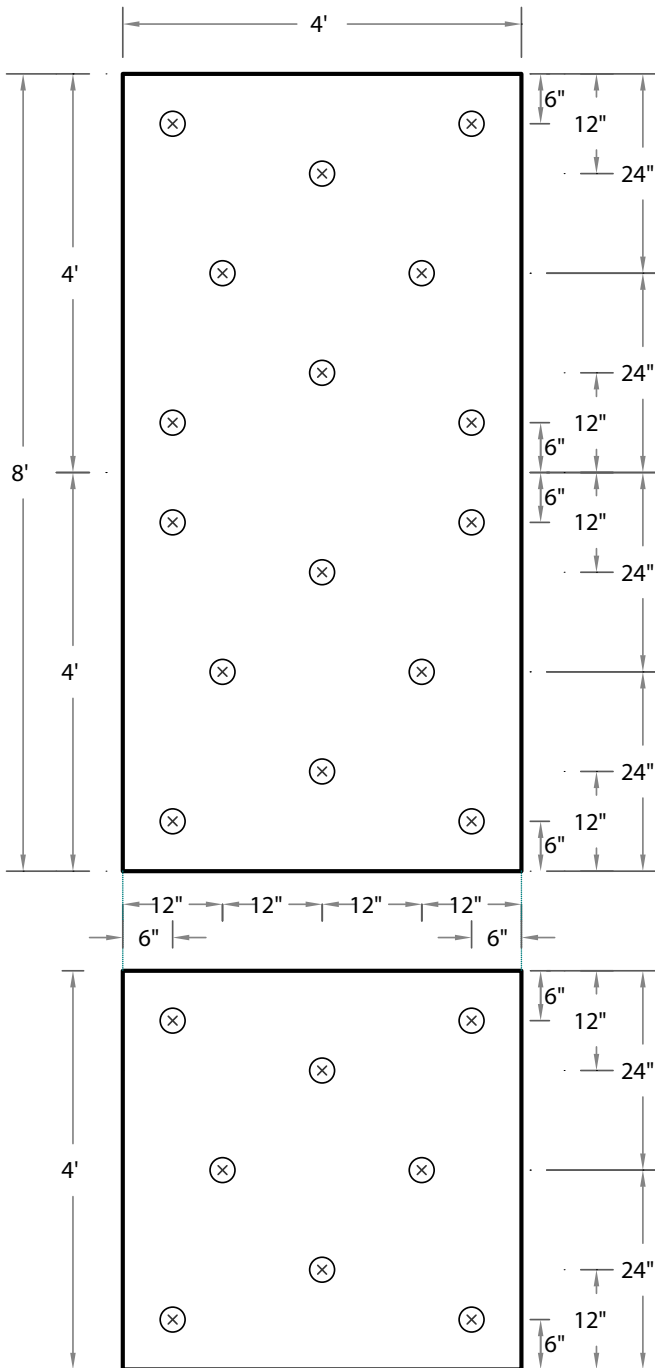


**FULLY ADHERED SINGLE PLY MEMBRANE SYSTEMS  
 BUILT-UP ROOFING MEMBRANE SYSTEMS  
 MODIFIED BITUMEN MEMBRANE SYSTEMS  
 MECHANICALLY ATTACHED SINGLE PLY MEMBRANE SYSTEMS**

**For insulation thicknesses 1/2" H-Shield HD only (field attachment only)\***



888.746.1114  
 HunterPanels.com



**Hunter Panels Products**

- H-Shield HD

**Deck Types**

- Steel – 22 Gauge Minimum
- Gypsum
- Structural Concrete
- Cementitious Wood Fiber

**4'x8' - 1 Fastener per 2 sq ft**

**4'x4' - 1 Fastener per 2 sq ft**

\*For Factory Mutual insured or FM Compliant projects and perimeter and corner attachments, please refer to FM Global Property Loss Prevention Data Sheets or FM's RoofNav website at [www.RoofNav.com](http://www.RoofNav.com).

When FM 1-90 guidelines are not required, wind uplift calculations should be done to determine whether a more appropriate uplift pressure (1-60 or 1-75) is better suited for that specific building and geographical location per ANCE/SPRI Wind design standard practice for roofing assemblies. See [www.Spri.org](http://www.Spri.org). This will permit prescriptive enhancements to be allowed in place of installing systems that have been tested to the pressures specified in the FM Global Loss Prevention Data Sheet 1-29.

**Hunter Panels Fastening Guide Requirements**

This applies to any single layer of H-Shield polyiso manufactured by Hunter Panels or a top layer fastened through a second layer of insulation.